



A better choice

A heating and cooling solution that does not interfere with the aesthetics of an historic castle.



“*Calor listened to our needs and helped install a system that not only heated and cooled the rooms but was in keeping with the aesthetics of the castle.*”

- Calor recommended energy solutions based on the estates specific requirements
- Sanyo's Gas Heat Pump provided the ideal solution to meet the Castle's needs
- The system is very effective and is extremely responsive whether you need to heat or cool the rooms making it both cost and energy efficient
- The new system resulted in heating efficiencies of over 140%

For further information visit www.lpg-heating.co.uk
Call 0800 216 659 or email enquiries@calor.co.uk

- BUSINESS Castle Leslie
- NAME Sammy Leslie
- POSITION Guardian

One of the few remaining family-owned castles in Ireland has installed some of the most up to date energy efficient heating and cooling technology as part of an ongoing improvement and restoration programme.

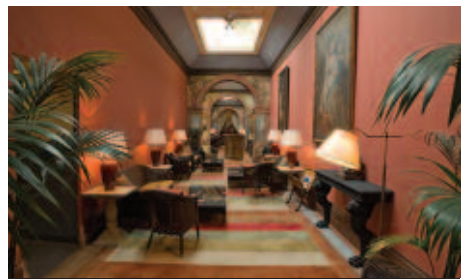
Castle Leslie, located in Monaghan, close to the border with Northern Ireland, has been home to the Leslie family since 1665 and is still run by members of the Leslie family today.

The secluded 1,000 acre private estate now offers some of the most unusual and enchanting luxury accommodation in Ireland including the castle itself, the four star hunting lodge hotel and the four star self-catering village cottages. The estate also boasts an equestrian centre, cookery school and Victorian Spa.

Sammy Leslie, current guardian of Castle Leslie, is responsible for the castle restoration project - a programme of improvements that has spanned almost 20 years. Throughout the renovations, Sammy has turned to Calor to provide a reliable, controllable fuel for heating, water heating and catering facilities throughout the estate.

Sammy explains: "The castle has always been ahead of its time, featuring the latest gadgets and technology, and was even built with a complete bell system in every area of the building. A central heating system was originally installed in the early 1900s, but by the 1990s, when the castle restoration project began, it was in much need of improvement.

"Calor has helped us to install a system that suits all of our needs, including heating and cooling for individual rooms as well as catering facilities and the company's advice has proved invaluable."



The latest area of restoration focused on the Long Gallery Wing of the castle

The ideal heating and cooling solution

Brian Derham, Calor Ireland Regional Manager, has worked alongside the Leslie family throughout the restoration project to recommend energy solutions based on the estate's specific requirements.

Brian explains:

“The latest area of restoration focused on the Long Gallery Wing of the castle, which was last heated over 100 years ago. The castle needed a heating and cooling solution that could be sympathetic to the preservation of the castle and would be environmentally sensitive, efficient and economical. It was vital to be able to both heat and cool the rooms quickly as there are many functions in this area of the castle.”

Sammy continues: “Originally, the rooms were heated from the floor via underfloor grills and through window boxes positioned in the bay windows. We wanted to install technology that could utilise this historical feature in a modern way and also eliminate the need for radiators.



Preservation of the castle was a key element in the installation of the new SANYO technology

As the rooms are very narrow, radiators would have taken up too much space and made the rooms difficult to furnish.”

SANYO's Gas Heat Pump provided the ideal solution to meet the castle's needs, as it could be installed using the original system and allowed the architecture and features of the Long Gallery to remain unaffected.

The system uses Calor LPG to power an internal combustion engine which in turn drives a belt driven refrigeration compressor, reducing the electricity demand on the building. Heat gathered from outside is coupled with the recovered waste heat produced from the combustion process to be used by the system resulting in heating efficiencies of over 140%.

In addition, the Gas Heat Pump cooler requires no defrost cycle as with traditional air con units, but provides continuous extremely efficient heating performance in severe winter conditions, even when outside temperatures reach as low as minus 20 degrees Celsius.



Underground tanks were installed to minimise visual impact, the underground tanks allow the ground above to be landscaped

The estate has a total of six bulk LPG tanks located throughout the estate for its catering and heating requirements. As with the three tanks serving the Hunting Lodge area of the estate, the new tank serving the SANYO unit has been installed underground to minimize visual impact. All that is visible is a green access cover allowing the ground above the tank to be landscaped.

LPG powered solution

Sammy concludes:

“We use Calor LPG throughout the estate so it was essential that we found an LPG-powered solution for the Long Gallery’s heating and cooling. The system is very effective and is extremely responsive whether we need to heat or cool the rooms making it both cost and energy efficient.”

THE BENEFITS AT A GLANCE.

- Simultaneous heating and cooling
- Free electricity generated (up to 4kw per hour) which can be used to power other equipment
- 65° free hot water guaranteed
- Increased efficiency = reduced running costs
- Offers ventilation and de-humidification
- ‘Free’ heat from environment is captured and redistributed internally
- Reduced CO₂ and NO_x emissions
- Heating efficiencies of over 140%
- Optional water chiller can be fitted
- 100% heating performance in severe winter conditions
- 10,000 run hours between servicing – 3.5 years on average
- Possible Government tax incentives
- Product qualifies for the Enhanced Capital Allowance

Calor has been supplying LPG for over 70 years. We have more experience and technical expertise than any other LPG supplier in the UK. Delivery is taken care of by the largest supply network and one of the largest fleets of delivery tankers in the UK.

The scale of our operation is matched only by the range of applications for Calor which we have developed and supported. As well as familiar uses like heating, hot water and catering, LPG can power cars, buses, vans, forklift trucks, generators and many other commercial and industrial applications. In fact, if you have a power or fuel requirement the versatility of Calor is sure to provide the solution.

For further information:

Call 0800 216 659

Visit www.lpg-heating.co.uk

Or email enquiries@calor.co.uk



A better choice